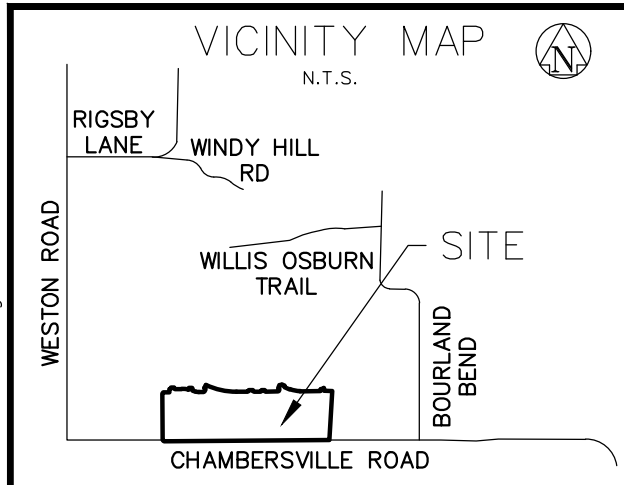


Copyright © 2020 Peloton Land Solutions, Inc.

DWG NAME: J:\JOB\LEN0001-VILLAGES AT WESTON\MASTER\DWG SURVEILLANCE\PAF.DWG PLOTTED BY: TYLER CARTER 12/2/2020 4:04 PM 12/2/2020 2:56 PM



CURVE TABLE				
NO.	DELTA	RADIUS	LENGTH	CHORD BEARING
C1	11°53'23"	495.00'	102.72'	S84°28'41"E 102.54'
C2	3°17'43"	225.00'	12.94'	S01°13'28"W 12.94'
C3	16°24'46"	175.00'	50.13'	S82°12'57"E 49.96'
C4	0°45'17"	1116.00'	14.70'	N65°01'40"W 14.70'
C5	25°46'22"	1066.00'	479.51'	S77°32'12"E 475.48'
C6	22°54'50"	400.00'	159.97'	S78°57'57"E 158.91'
C7	6°19'43"	175.00'	19.33'	N18°53'49"W 19.32'
C8	10°48'44"	225.00'	42.46'	S16°39'17"E 42.40'
C9	16°24'51"	470.00'	134.65'	S82°12'57"E 134.19'
C10	11°44'36"	200.00'	40.99'	N05°26'55"E 40.92'
C11	16°24'52"	200.00'	57.30'	S82°12'57"E 57.10'
C12	66°46'45"	25.00'	29.14'	N56°11'15"E 27.52'
C13	2°33'05"	1091.00'	48.58'	S65°55'33"E 48.58'
C14	23°13'17"	1091.00'	442.17'	S78°48'44"E 439.15'
C15	67°05'08"	25.00'	29.27'	N56°02'03"E 27.63'

CURVE TABLE				
NO.	DELTA	RADIUS	LENGTH	CHORD BEARING
C16	22°54'52"	425.00'	169.97'	S78°57'57"E 168.84'
C17	18°20'45"	200.00'	64.04'	N12°53'08"W 63.77'
C18	6°43'54"	200.00'	23.50'	N00°20'48"W 23.48'
C19	16°24'52"	200.00'	57.30'	S82°12'57"E 57.10'
C20	16°24'52"	470.00'	134.65'	S82°12'57"E 134.19'
C21	90°00'00"	250.00'	392.70'	N45°25'23"W 353.55'
C22	8°00'25"	500.00'	69.87'	N07°01'22"E 69.82'
C23	5°33'57"	500.00'	48.57'	N13°48'33"E 48.55'
C24	17°00'54"	200.00'	59.39'	N08°05'04"E 59.18'
C25	12°18'50"	500.00'	102.09'	S09°20'55"W 101.89'
C26	17°00'54"	242.50'	72.01'	S08°05'04"W 71.75'
C27	5°51'15"	200.00'	20.43'	N05°56'47"E 20.43'
C28	0°17'00"	200.00'	0.99'	N09°00'55"E 0.99'
C29	9°34'47"	157.50'	26.33'	N04°22'01"E 26.30'

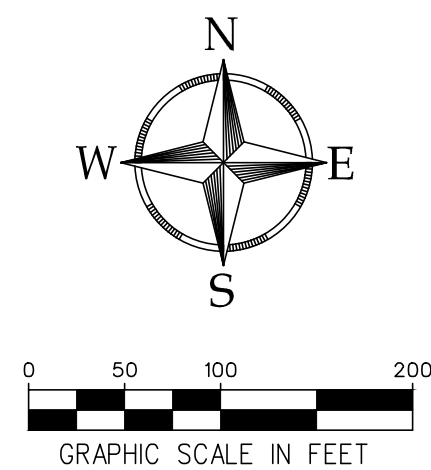
LINE TABLE		
NO.	BEARING	LENGTH
L1	N45°22'01"W	28.26'
L2	N89°34'37"E	15.00'
L3	N44°34'37"E	14.14'
L4	N00°25'23"W	14.34'
L5	S00°25'23"E	15.00'
L6	S45°25'23"E	14.14'
L7	N89°34'37"E	100.00'
L8	N51°31'29"E	12.72'
L9	N00°25'23"W	18.47'
L10	S00°25'23"E	19.14'
L11	S34°55'54"E	15.53'
L12	S74°00'31"E	43.16'
L13	N89°34'37"E	74.64'
L14	N56°11'15"E	16.70'
L15	N22°47'52"E	34.97'
L16	N21°25'55"W	14.33'
L17	N44°34'37"E	119.97'
L18	N00°25'23"W	9.34'
L19	S00°25'23"E	9.34'
L20	S45°25'23"E	21.21'

LINE TABLE		
NO.	BEARING	LENGTH
L21	N89°34'37"E	105.00'
L22	N44°34'37"E	14.14'
L23	N00°25'23"W	14.34'
L24	S00°25'23"E	14.34'
L25	S45°25'23"E	14.14'
L26	N56°02'03"E	16.67'
L27	N22°29'29"E	24.97'
L28	N22°30'31"W	14.14'
L29	N67°30'31"W	15.00'
L30	S67°30'31"E	15.00'
L31	N67°29'29"E	14.14'
L32	N22°29'29"E	15.00'
L33	N89°34'37"E	19.14'
L34	S74°00'31"E	75.00'
L35	N89°34'37"E	84.64'
L36	N22°47'52"E	79.68'
L37	N22°29'29"E	119.97'
L38	S74°00'31"E	75.00'
L39	N45°25'23"W	21.21'
L40	N44°34'37"E	21.21'

LINE TABLE		
NO.	BEARING	LENGTH
L41	N00°25'23"W	69.40'
L42	N44°34'37"E	14.14'
L43	N44°34'37"E	14.14'
L44	S67°01'40"W	14.32'
L45	S45°25'23"E	14.13'
L46	N44°34'37"E	14.13'
L47	S45°25'23"E	21.19'
L48	N44°34'37"E	21.20'
L49	S45°25'23"E	14.16'
L50	N44°34'37"E	14.14'
L51	N67°29'29"E	14.14'
L52	S43°42'07"E	13.72'
L53	N45°25'23"W	14.14'
L54	S44°34'37"W	14.14'
L55	N45°25'23"W	14.14'
L56	S46°17'53"W	14.56'
L57	N44°34'37"E	14.14'
L58	S45°25'23"E	14.14'
L59	N44°34'37"E	14.14'
L60	S43°42'07"E	13.72'
L61	S02°56'00"W	1.41'

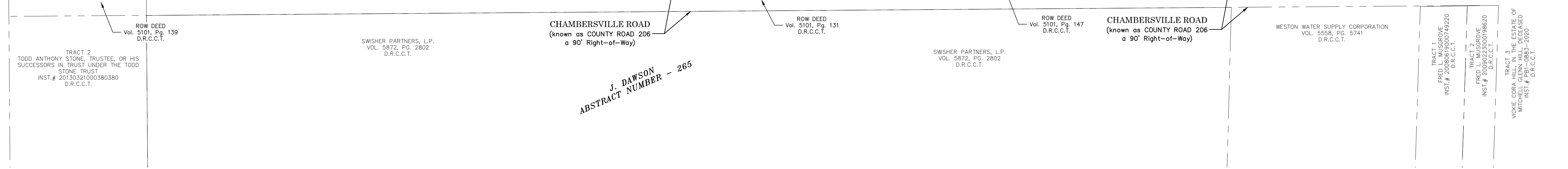
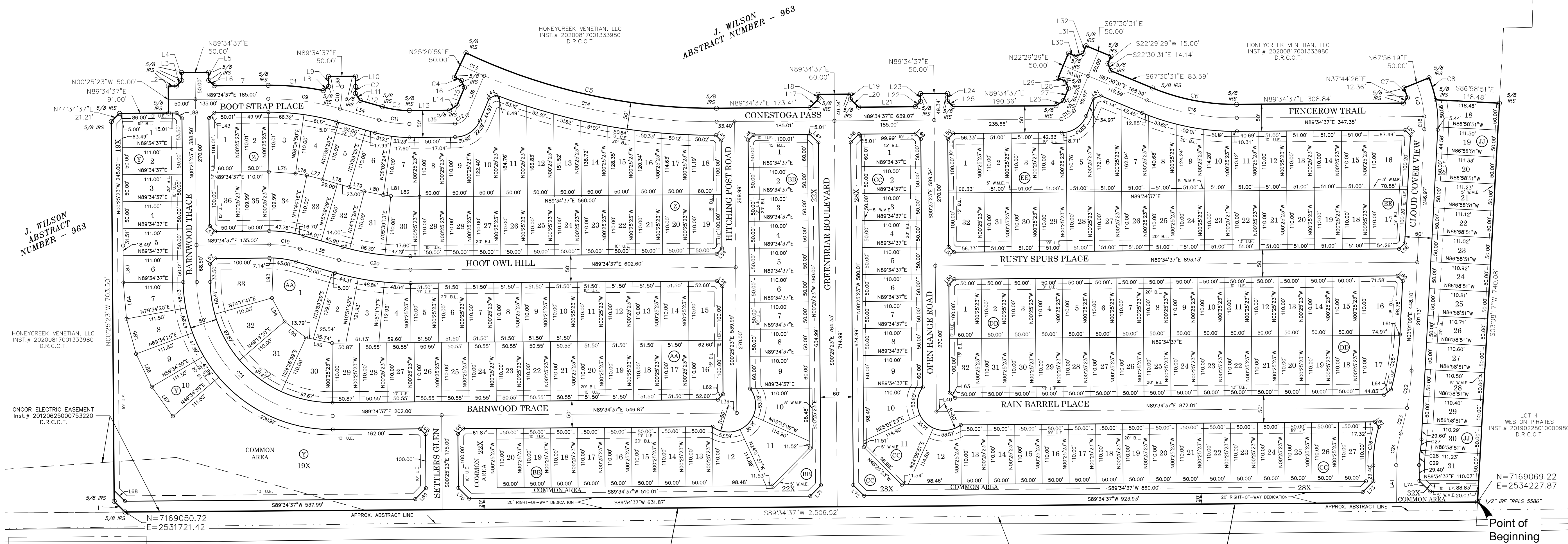
LINE TABLE		
NO.	BEARING	LENGTH
L62	S44°34'37"W	14.14'
L63	N45°25'23"W	14.14'
L64	S52°50'31"W	16.03'
L65	S45°25'23"E	14.14'
L66	N44°34'37"E	14.14'
L67	S37°22'36"E	12.04'
L68	N45°25'23"W	28.29'
L69	S44°34'37"W	28.28'
L70	N45°25'23"W	28.28'
L71	S44°34'37"W	28.29'
L72	N45°25'23"W	28.29'
L73	S44°34'37"W	28.28'
L74	N45°25'23"W	28.28'
L75	N86°09'16"W	49.87'
L76	N80°04'27"W	21.18'
L77	N75°46'46"W	29.86'
L78	N74°00'31"W	52.00'
L79	N74°20'27"W	28.53'
L80	N78°53'05"W	35.94'
L81	S83°09'11"E	13.95'

LINE TABLE		
NO.	BEARING	LENGTH
L82	N88°23'28"W	53.09'
L83	N00°25'23"W	68.49'
L84	N05°00'06"W	67.38'
L85	N15°25'38"W	67.36'
L86	N25°25'33"W	67.36'
L87	N35°25'28"W	67.36'
L88	S45°25'23"E	14.13'
L89	N01°54'46"E	73.92'
L94	N28°14'29"W	49.53'
L95	N53°06'51"W	49.53'
L96	N77°59'12"W	49.53'



LEGEND

- B.L. BUILDING LINE
U.E. UTILITY EASEMENT
D.E. DRAINAGE EASEMENT
S.S.E. SANITARY SEWER EASEMENT
W.M.E. WALL MAINTENANCE EASEMENT
IRF IRON ROD FOUND
IRS IRON ROD SET
D.R.C.C.T. DEED RECORDS, COLLIN COUNTY, TEXAS
- 5/8 IRS 5/8 IRON ROD WITH CAP
STAMPED "PELTON" SET



Revisions:			
LEN20001	MRY/JTC	CSR	12/2/2020
Job #:	Drawn By:	Checked By:	Date:

PELTON
LAND SOLUTIONS

11000 FRISCO ST. SUITE 400, FRISCO, TX 75033 PH# 469-213-1800

SHEET
1
OF 2 SHEETS

A FINAL PLAT OF
VENETIAN AT WESTON, PHASE 1
204 RESIDENTIAL LOTS,
4 OPEN SPACE / COMMON AREAS 4.177 ACRES
AND RIGHT-OF-WAY DEDICATION 12.268 ACRES
TOTALING 44.579 ACRES
SITUATED IN THE
J. WILSON SURVEY, ABSTRACT NUMBER 963
CITY OF WESTON, COLLIN COUNTY, TEXAS

OWNER/DEVELOPER	SURVEYOR	ENGINEER
HONEYCREEK VENETIAN, LLC 520 CENTRAL PARKWAY EAST, #104 PLANO, TX 75093 972-422-9880	PELTON LAND SOLUTIONS 11000 FRISCO ST., SUITE 400 FRISCO, TEXAS 75033 469-213-1800	PELTON LAND SOLUTIONS 11000 FRISCO ST., SUITE 400 FRISCO, TEXAS 75033 469-213-1800

