

**RESOLUTION NO. 2013-08-02**

**A RESOLUTION OF THE CITY OF WESTON, COLLIN COUNTY, TEXAS, ADOPTING AN OFFICIAL MAP OF THE MUNICIPAL BOUNDARIES OF THE CITY OF WESTON.**

**WHEREAS**, the City of Weston was duly incorporated as a Type B General Law Municipality in 1971 and duly changed to Type A General Law Municipality in 1998;

**WHEREAS**, the City of Weston has modified its boundaries by several annexations and disannexations enacted after the City was incorporated in 1971;

**WHEREAS**, the City of Weston has requested Collin County Geographical Information Services (CCGIS) to prepare a map of the boundaries of the City of Weston as those boundaries currently exist. A copy of said map is attached hereto and made a part hereof as Exhibit "A";

**WHEREAS**, the Weston City Council has reviewed the map depicted in Exhibit "A" and finds said map to be consistent with the Council's understanding of the boundaries of the City as those boundaries currently exist; and

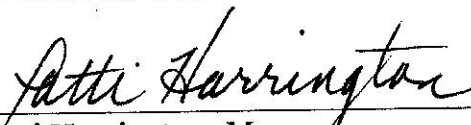
**WHEREAS**, the Weston City Council finds that said map should be adopted as the official map of the municipal boundaries of the City of Weston as those boundaries currently exist.

**NOW THEREFORE, BE IT RESOLVED**, by the City Council of the City of Weston that the map prepared by CCGIS and attached hereto as Exhibit "A" is hereby adopted for all purposes as the official map of the municipal boundaries of the City of Weston, Collin County, Texas.

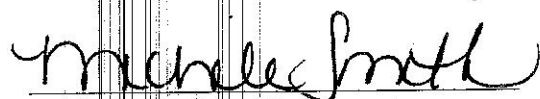
**BE IT FURTHER RESOLVED** that a certified copy of said map and this resolution shall be filed with the Collin County Central Appraisal District and Collin County Clerk.

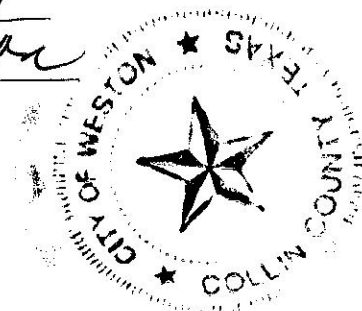
**ADOPTED** by the City Council of the City of Weston, Texas on this **13th day of AUGUST, 2013**.

APPROVED BY:

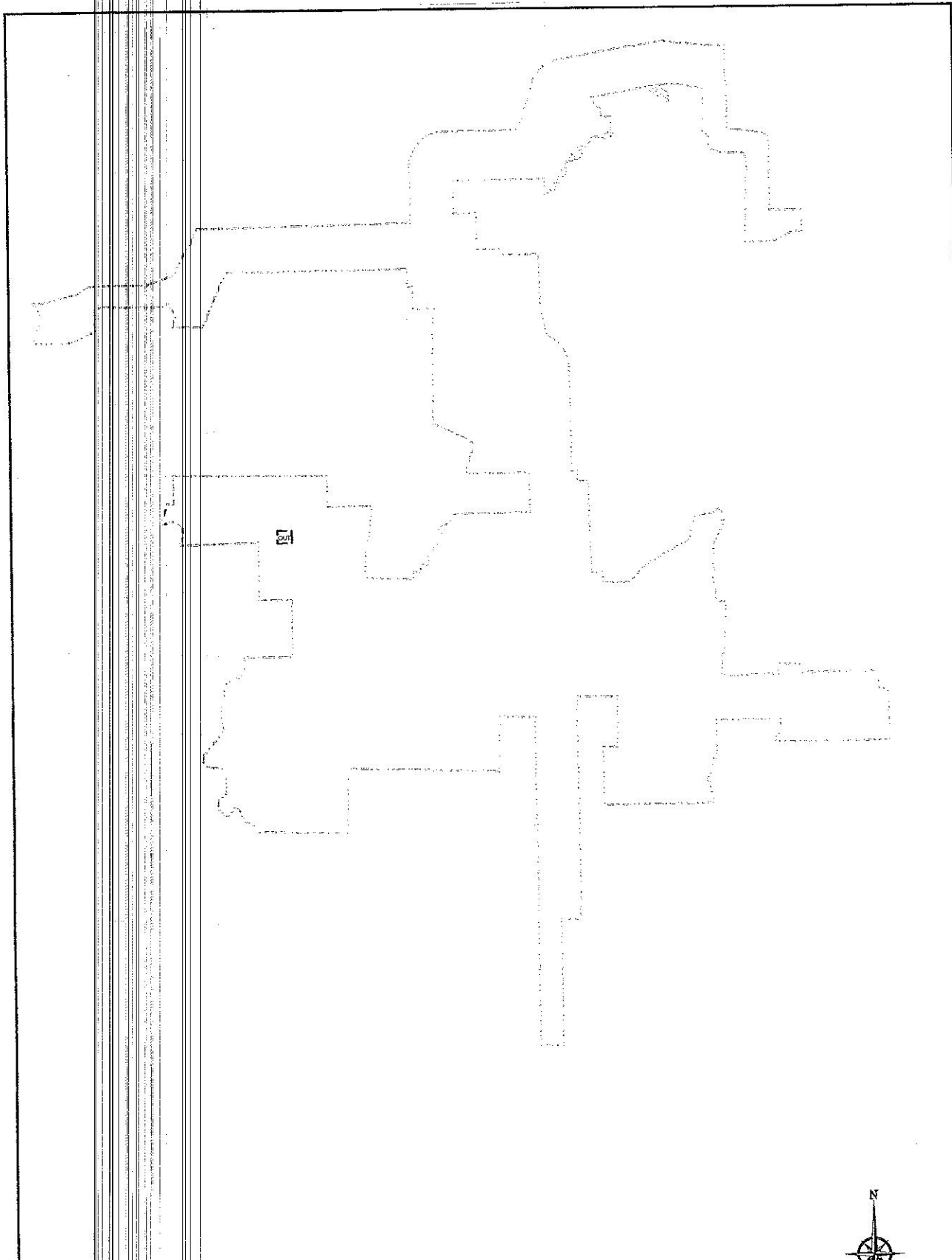
  
Patti Harrington, Mayor

ATTESTED BY:

  
Michele Smith, City Secretary

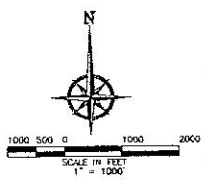


# 'Exhibit A'



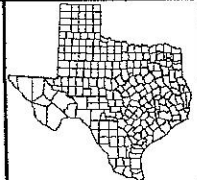
### LEGEND

CITY OF WESTON CITY LIMITS  
PER MAP ADOPTED AUGUST 27, 2011  
AND AMENDATIONS DATED JULY 2013



**MLA CONSULTING**  
ENGINEERS & PLANNERS

MLA CONSULTING, LLC  
1111 WEST 19TH STREET  
SUITE 400  
DALLAS, TEXAS 75202  
972-782-8600  
972-782-1211  
WWW.MLAENGINEERS.COM



## CITY MAP CITY OF WESTON COLLIN COUNTY, TEXAS

SCALE: 1"=1,000'
DATE: 8/13/2013
MLA JOB#: 14000
SHEET: 1 OF 1
FILE: 114000ZM-10-9-12.dwg